



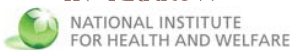
COURAGE in EUROPE

Collaborative Research On Ageing in Europe

Project Coordinator



JAGIELLONIAN
UNIVERSITY
IN KRAKOW



**Ordine Ospedaliero di
San Giovanni di Dio
Fatebenefratelli**



Kick-off Meeting
22 – 23 June 2009
Milan, Italy

A project funded by the EU Commission





Project Coordinator



Partners



JAGIELLONIAN
UNIVERSITY
IN KRAKOW



Ordine Ospedaliero di
San Giovanni di Dio
Fatebenefratelli



National Institute for Health and Welfare (THL)

- Formed 1 January 2009 through the merger of the National Public Health Institute (KTL) and the National Research and Development Centre for Welfare and Health (STAKES)
- Operates under the Ministry of Social Affairs and Health
- Director General: Professor Pekka Puska, MD, PhD, M.Pol.Sc.
- Main location in Helsinki; units in six other cities: Turku, Tampere, Jyväskylä, Kuopio, Oulu and Vaasa
- Total budget in 2009 is 96 million euros: 64% from the State Budget and 36% from other funding source
- Total staff about 1400
 - Permanent staff: 927
 - Fixed-term project staff: 425
 - Highly multiprofessional





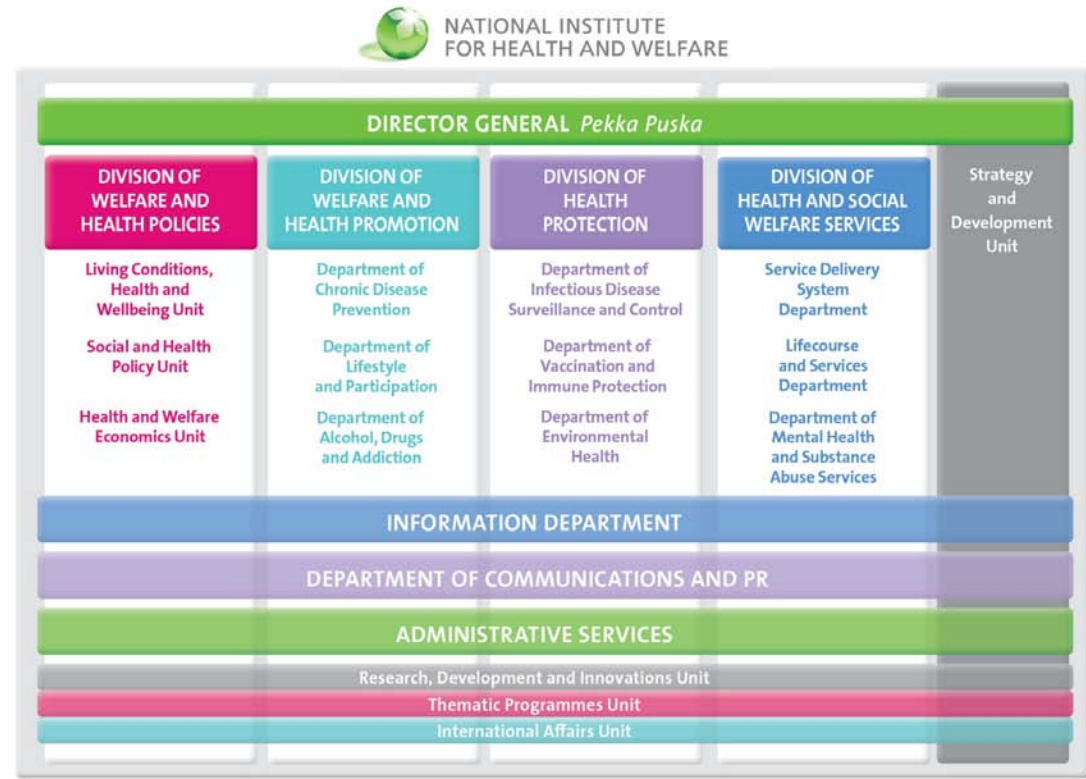
Project Coordinator



Partners



THL: Organisational structure





Project Coordinator



Partners



JAGIELLONIAN
UNIVERSITY
IN KRAKOW



Ordine Ospedaliero di
San Giovanni di Dio
Fatebenefratelli



COURAGE IN EUROPE AT THL: Principal Investigators

- **Seppo Koskinen**, Chief physician, Head of the Living Conditions, Health and Wellbeing Unit. MD, PhD, M.Soc.Sc. (Sociology), M.Sc. (Epidemiology), Adjunct Professor in Demography. Responsible for planning and supervising the Health 2000 survey.
- **Kristian Wahlbeck**, Professor. MD. Psychiatrist. Professor of Psychiatry at University of Helsinki, Adjunct Professor of Psychiatry at University of Tampere. Has successfully coordinated several European projects (EU-PSI, MINDFUL, etc.)





Project Coordinator



Partners



JAGIELLONIAN
UNIVERSITY
IN KRAKOW



Ordine Ospedaliero di
San Giovanni di Dio
Fatebenefratelli



COURAGE IN EUROPE AT THL: Other staff (1/2)

- **Fredrica Nyqvist**, Ph.D. (Social Policy). Several original publications on social capital and health based on the Health 2000 data from Finland.
- **Elina Kestilä-Kekkonen**, Ph.D. (Political Science), Coordinator of ECHIM project. Instruments of health monitoring.
- **Tommi Härkänen**, Ph.D., Statistician. Expert in e.g. survival analysis, complex sampling procedures, Bayesian inferences and survey analysis, analysis of quality of life data
- **Katri Kilpeläinen**, M.Sc. (Health Science). Coordinator of ECHIM project. Instruments of health monitoring.





Project Coordinator



Partners



JAGIELLONIAN
UNIVERSITY
IN KRAKOW



Ordine Ospedaliero di
San Giovanni di Dio
Fatebenefratelli



COURAGE IN EUROPE AT THL: Other staff (2/2)

- **Matti Ojala**, Dr. MD. Chief physician (Services for Disabled Persons Unit). A member of WHO Functioning, Disability Reference Group (2007) and the co-chair of the FDRG/TG8 ICF and Terminology. Expertise: health classifications, health care standards and semantic mining.
- **Hannu Rintanen**, Dr. MD. Senior Medical Officer. Expert in national health care statistics.
- **Tuija Martelin**, Ph.D., Senior Researcher. Expertise: trends and determinants of health and health inequalities and their impact on functional capacity.
- **Esa Virtala**, Specialist in IT and statistical analysis. 20-year experience in planning and implementation of data management in large research projects.
- **Marko Ekqvist**, M.Sc. (Technology). Considerable experience of handling major health databases.
- **+ other experts in the fields of health, wellbeing, functional capacity (physical and cognitive), quality of life, social capital, health examination surveys etc.**





Project Coordinator



Partners



JAGIELLONIAN
UNIVERSITY
IN KRAKOW



Ordine Ospedaliero di
San Giovanni di Dio
Fatebenefratelli



THL: Responsibilities in COURAGE in Europe

- Participates in planning the main instruments to be used in the field survey, focusing especially on instruments for assessment of social networks (WP1)
- Takes part in the training of the field personnel (WP2) and in planning the population survey and will carry it out in Finland
- Is responsible for final data checks and database cleaning (WP3)
- Participates in data analysis (WP4), dissemination activities (WP5) and management (WP6)
- Synergy brought by close collaboration with several related EU projects





Project Coordinator



Partners



JAGIELLONIAN
UNIVERSITY
IN KRAKOW



Ordine Ospedaliero di
San Giovanni di Dio
Fatebenefratelli



THL: Person months in Work Packages (THL/total)

- **WP1: 14/95**
- **WP2: 4/58**
- **WP3: 42/273**
- **WP4: 11/103**
- **WP5: 1/58.5**
- **WP6: 0.65/42.95**
- **Total: 72.65/630.45**





Project Coordinator



Partners



JAGIELLONIAN
UNIVERSITY
IN KRAKOW



Ordine Ospedaliero di
San Giovanni di Dio
Fatebenefratelli



THL: Tasks to be led in Work Packages

- WP1 (Development of protocol and assessment of ICF-based instrument):
Systematic review of the relationship between social networks and functioning profiles in later life (Task 1.7)
- WP2 (Training):
Training of interviewers at the survey sites (together with SJD-SSM & JUMC) (Task 2.2)
- WP3 (Validation of ICF-based instruments in Finland, Spain, Poland through a population study):
Preparation of the final cleaned, weighted data set (Task 3.4)

